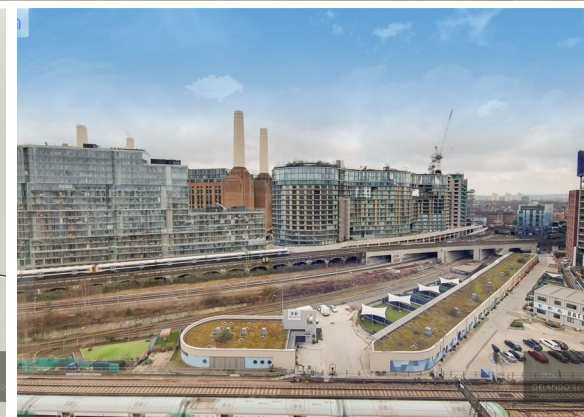




**2 Bed
Apartment
located in**

£3,900 PCM

ORLANDO REID



ORLANDO REID
LONDON



Cascade Court, SW11

CAPTURE DATE: 03/03/2022 LASER SCAN POINTS: 2,504,678

GROSS INTERNAL AREA

100.14 sqm / 1077.90 sqft



— Eleventh Floor

GROSS INTERNAL AREA (GIA)
The footprint of the property
100.14 sqm / 1077.90 sqft

NET INTERNAL AREA (NIA)
Excludes walls and structural features
Includes mezzanines, restricted head height
91.63 sqm / 986.30 sqft

EXTERNAL STRUCTURAL FEATURES
Balconies, terraces, verandas etc.
0.00 sqm / 0.00 sqft

RESTRICTED HEAD HEIGHT
Limited use area under 1.8 m
0.00 sqm / 0.00 sqft



Spec Verified floor plans are produced in accordance with Royal Institution of Chartered Surveyors' Property Measurement Standards. Plots and gardens are illustrative only and excluded from all area calculations. Due to rounding, numbers may not add up precisely. All measurements shown for the individual room lengths and widths are the maximum points of measurements captured in the scan.

IPW 3B RESIDENTIAL 103.38 sqm / 1099.09 sqft
IPW 3C RESIDENTIAL 93.31 sqm / 1004.30 sqft

spec id: 621f72846f5d90de8e7f748

Energy Efficiency Rating

	Current	Potential
<i>Very energy efficient - lower running costs</i>		
(92 plus) A		
(81-91) B		
(69-80) C		
(55-68) D		
(39-54) E		
(21-38) F		
(1-20) G		
<i>Not energy efficient - higher running costs</i>		
EU Directive 2002/91/EC		
England & Wales		

DIRECTIONS

CONTACT

1-3 Old Town
Clapham
London
SW4 0JT

E: lettings@orlandoreid.co.uk
T: 020 7627 3197
www.orlandoreid.co.uk

